



SOUTHEAST ASIA





SOUTHEAST ASIA








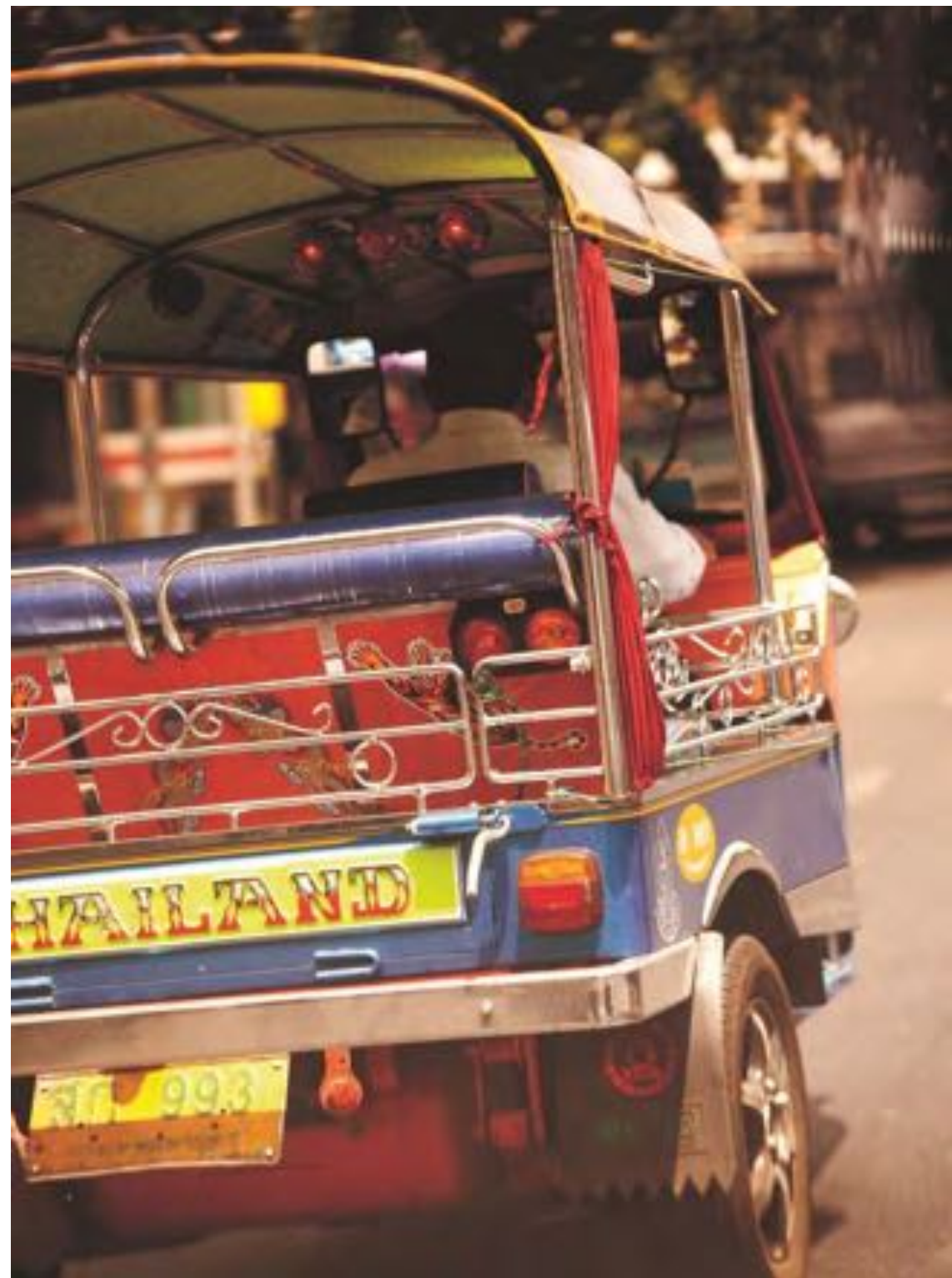
JOURNEY TO THE EAST

Travel in style through the heart of Southeast Asia aboard the magnificent Eastern & Oriental Express, sister of the famous Venice Simplon-Orient-Express, passing vibrant cities, rural villages and gleaming pagodas.

 ur captivating journeys offer both enticing introductions to the regions between Singapore and Bangkok that delve deeper, visiting tea plantations, royal towns or charming coastal villages.

With all of our itineraries you have ample options to explore. Alight to discover fascinating destinations such as Penang, Chiang Mai and the River Kwai. Enjoy drinks on board, immerse yourself in vibrant, maze-like markets and encounter inspiring local people, such as tea growers or silk weavers. And after each journey, return to the train to be looked after by our superb on-board team in unrivalled luxury. Prepare for a dazzling adventure.

The luxurious Eastern & Oriental Express is the ideal vantage point from which to discover the treasures of Southeast Asia.





A GREAT ESCAPE

There are many ways to experience the Eastern & Oriental Express, from one-way train journeys between Singapore and Bangkok to off-the-beaten-track adventures and tailor-made Inclusive Tours.

WHERE Our Classic Journeys carry you in luxury from **Singapore to Bangkok**, and vice versa, with stops to explore the Bridge over the River Kwai and Penang or the royal town of Perak. Our two Signature Journeys comprise **The Ancient Lanna Kingdom**, with visits to Lampang and Chiang Mai in northern Thailand, and **Fables of the Peninsula**, which takes you into Malaysia's Cameron Highlands.

WHEN Two- to five-night train journeys all year round.

HOW Choose between two main experiences:

Train Journey: a trip on the Eastern & Oriental Express.

Inclusive Tour: this combines a train journey with a stay at one of our Belmond hotels near Angkor Wat or at Luang Prabang, a city break in Singapore or Bangkok, or a beach resort experience on the islands of Bali or Koh Samui. Flights, transfers and tour guides are included.



EMBARK ON A JOURNEY OF A LIFETIME

Relax in your beautifully appointed cabin, dine on exquisite feasts in the restaurant cars and soak up the mesmerising landscapes and immeasurable romance of a journey unlike any other.

Cocktails, fine cuisine, convivial company and spectacular views: this is what life aboard the Eastern & Oriental Express is all about. Our fabulous staff will look after you at every step, from the friendly stewards to the Maitre D' and your Train Manager. Attentive but discreet, their aim is to make your journey seamlessly smooth and indulgently relaxing. All of our sightseeing excursions are escorted by expert guides. We aim to provide the perfect balance between leisure time on board and inspiring exploration off the train.

Attentive service, luxurious cabins and fine dining make for a memorable adventure as you pass through enchanting scenery.

DINE IN STYLE in one of our three glamorous Restaurant Cars—Adisorn, Rosaline and Malaya—two of which join the train for each journey. Featuring sumptuous woods and lacquered panels, each car is decorated in exquisite floral motifs reflecting the culture of the region. Menus offer delectable Eastern and Western specialities, from pan-fried sea scallops to Nyonya curry.

THE OBSERVATION CAR at the very end of the train, can offer refreshments for early risers. An outdoor area is the perfect place from which to admire the scenery.

THE SALOON CAR has a reading room and boutique. Browse through the books and magazines or play one of our selection of games. The boutique has a choice of delightful mementos of your train journey.

THE PIANO BAR is open all day and late into the night, serving cocktails and liqueurs. It hosts a resident pianist, and there is local entertainment on selected evenings.

WHAT TO WEAR We recommend eveningwear for dinner, smart daywear at other times and light cotton clothing for sightseeing. Please respect local cultures by wearing appropriate clothing when visiting temples.





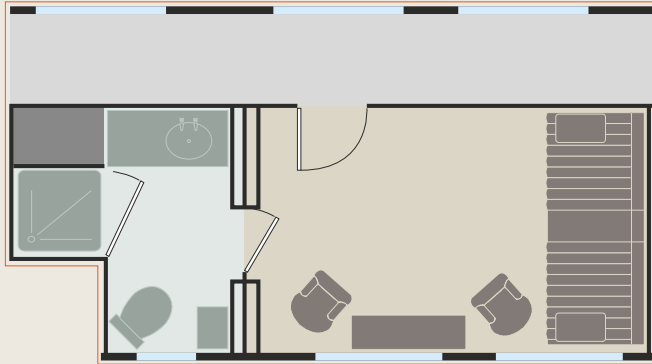
DIVINE DESIGN

Local materials and luxurious design combine in the train's beautiful interiors. The Saloon Car offers a vintage Chinese feel, for example, while the Observation Car exudes a colonial “veranda” ambience with teakwood flooring and panelled walls.

There are four categories of cabins: Pullman Single, Pullman, State Cabin and Presidential Cabin. All are fully air-conditioned with en-suite shower and toilet. A warm elegance is attained through the use of cherrywood and elm burr panelling, decorative marquetry and fine fabrics.

The Pullman Cabins have upper and lower berths. State Cabins and the Presidential Cabin offer two single beds at floor level. All Pullman Singles have one single bed at floor level. During the day, berths/single beds are converted into comfortable seating so guests can relax and admire the ever-changing vistas.

Each category of our elegant air-conditioned private cabins is wood panelled and has large picture windows.



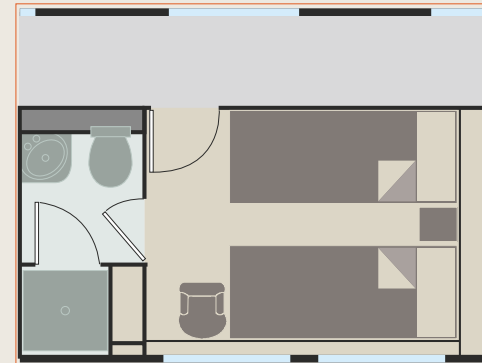
Presidential Cabin day configuration



Presidential Cabin night configuration



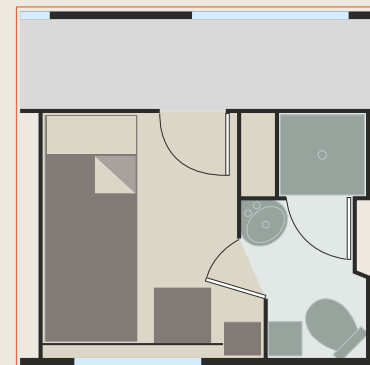
State Cabin day configuration



State Cabin night configuration



Pullman Cabin day configuration



Pullman Cabin night configuration

Illustrations
not to scale

DESTINATIONS TO AMAZE

We take you to some of Southeast Asia's most exciting towns, cities, regions and islands. Here is a taste of some of the magical places you can visit.



BANGKOK

Founded by the first king of the Chakri dynasty in 1782, Bangkok blends old and new in a dynamic metropolis. Explore the Grand Palace and exquisite Emerald Buddha, buy exotic produce from the floating market, travel back in time to the temples of Wat Pho and be invigorated by an authentic Thai massage.

CHIANG MAI

Surrounded by mountains, Thailand's charming second city—also known as the “Rose of the North”—is home to hundreds of sacred temples, yet at the same time has a dynamic, modern ambience. Explore its hip bars and spas, soak up the scenery, enjoy warm hospitality or embark on adventurous activities such as white-water rafting.

RIVER KWAI

A moving tribute to human endurance, the infamous bridge over the River Kwai, near Kanchanaburi in western Thailand, was built by World War II prisoners of war as part of the Death Railway linking Thailand with Burma. View it on a barge cruise down the river followed by a visit to the Thailand-Burma Railway Centre.

SINGAPORE

In The Lion City, traditional culture meets cosmopolitan cool. Stroll around Little India, the old Malay-Arab quarter and Chinatown to soak up some local flavours. Shop in designer malls or dine in acclaimed restaurants. For beach relaxation, ride the cable car to Sentosa Island, enjoying fabulous aerial views.

PENANG

The small island off Malaysia's west coast has a rich trading history and is a melting pot of cultures and cuisine. Whether enjoying fine dining or mouthwatering street food, gourmets will be in their element. The UNESCO-listed capital, George Town, has impressive colonial architecture, grand churches and temples.

PERAK

In this western region of Peninsular Malaysia, discover magnificent caves, beautiful waterfalls, wildlife sanctuaries, pretty fishing villages, glorious beaches and idyllic islands. As well as an abundance of natural beauty spots, there are heritage sites to explore, including the royal city of Kuala Kangsar, home to the Sultan of Perak.

Left: a floating market, Bangkok.
Right: Kek Lok Si Temple in Air Itam, Penang.



YOUR JOURNEY STARTS HERE

Read on to discover more about our **Train Journeys** and **Inclusive Tours** and be inspired to add a few extra days onto your trip with our **Explore and Discover** ideas, **Extend the Experience** suggestions and **Stay in Style** hotel recommendations.

TRAIN JOURNEYS

OUR CLASSIC ROUTES

BANGKOK-SINGAPORE

4 DAYS & 3 NIGHTS

Day 1 Board the train at Hualampong station and settle into your private cabin. Enjoy your first meal in the Restaurant Car.

Day 2 After breakfast, disembark in the town of Kanchanaburi for a riverside tour, with an historian, to the bridge over the River Kwai.

Optional visits to the war museum and cemetery. Back on board, relax until dinner.

Day 3 The train heads towards the border town of Padang Besar, where Thailand meets Malaysia. Alight at Butterworth for the crossing to Penang island. Explore George Town, including a grand Chinese clan temple, a Peranakan heritage museum and the old-world Eastern & Oriental Hotel.

Day 4 Watch the passing scenery as you enjoy breakfast in your cabin. The train then crosses the Causeway into Singapore and journey's end.

SINGAPORE-BANGKOK

3 DAYS & 2 NIGHTS

Day 1 Board the Eastern & Oriental Express in Singapore and enjoy afternoon tea as the train travels across the Causeway into Malaysia. Dress for cocktails and your first delicious dinner on board. The train makes a brief stop in Kuala Lumpur before travelling onward to the northern state of Perak.

Day 2 Arrive at Kuala Kangsar, the old royal town of Perak.

An illuminating tour takes you to the grand Ubudiah Mosque, the Royal Museum of Perak, one of the oldest rubber trees in Malaysia, and the Sultan Shah Gallery. Return to the train and continue towards the Thai border.

Day 3 After breakfast alight for a guided boat trip on the River Kwai. Visits to the war museum and cemetery are included if wished. Continue to Bangkok and disembark.

Right: enjoy the breathtaking views of the River Kwai.





INCLUSIVE TOUR

NEW YEAR IN STYLE

BANGKOK-SINGAPORE

4 DAYS & 3 NIGHTS

Ring in the New Year on this special itinerary. Enjoy it as part of an Inclusive Tour, combining it with a hotel stay in Singapore or Bangkok and tailor-made activities.

Day 1 Depart Singapore in the afternoon. Afternoon tea is later followed by a superb dinner.

Day 2 After breakfast in your cabin, alight at Butterworth to explore Penang, enjoying tours of the Tropical Spice Garden, George Town and lunch in a local restaurant. Back on board, afternoon tea and dinner are served.

Day 3 Listen to an illuminating presentation on tropical fruits after breakfast. Then enjoy a leisurely day on board before preparing for a sumptuous New Year's Dinner. Afterwards, change into your beachwear for a party on the sands with live music and champagne.

Day 4 Arrive in Bangkok in the morning and wave farewell to the train.



EXPLORE AND DISCOVER

SINGAPORE and BANGKOK

Before or after your train journey, we can arrange the following sightseeing tours in the fascinating destinations of Singapore or Bangkok. Or let us create a bespoke itinerary to suit your special interests.

SINGAPORE

City Tour and Bumboat Ride A traditional boat ride and visits to sights including the Padang, Parliament House and National Orchid Garden.

Historical Singapore Visit the Singapore City Gallery to learn about the island's evolution, then take a train to Orchard Road.

Trishaw Tour and Singapore Sling An evening trishaw ride to Little India followed by a cocktail at legendary Raffles Hotel.

Breakfast at the Zoo Enjoy a Jungle Breakfast among the zoo's residents, then time to explore the enclosures at leisure.

BANGKOK

Grand Temple and Temple of The Emerald Buddha A visit to the ornate palace and exquisite Buddha followed by a long-tail boat ride.

Floating Market and the Rose Garden Excursion to Damnern Saduak floating market followed by lunch, traditional entertainment and an elephant ride at the Rose Garden.

Ayuthaya Tour Full-day visit to the former capital of Thailand, founded in the 14th century.

City and Temple Tour Half-day visit to the city's main temples, including Wat Traimit, Wat Pho and Wat Benchamabophit.

Left: Sri Veeramakaliamman Temple in Little India, Singapore.
Right: the Grand Palace, Bangkok.



STAY IN STYLE

BANGKOK

Mandarin Oriental

Expansive river views, spacious rooms, and excellent restaurants are the hallmarks of this world-renowned hotel.

The Peninsula

Luxury meets Thai charm on the west bank of the Chao Phraya River. Amenities include a three-tiered pool.

St Regis

A premier location, exquisite dining and inviting outdoor pool provide the perfect urban retreat.

SINGAPORE

Raffles

The legendary hotel is housed in a beautiful colonial building. Its Long Bar is where the Singapore Sling was invented.

St Regis

With a downtown location, this opulent hotel has art deco-inspired rooms and a fabulous private art collection.

Mandarin Oriental

Set in the heart of Marina Bay, the hotel offers fabulous dining and a sublime spa.

OUR SIGNATURE JOURNEY

THE ANCIENT LANNA KINGDOM

BANGKOK-LAMPANG-CHIANG MAI-BANGKOK

3 DAYS & 2 NIGHTS

This two-night experience can be added onto a Classic Journey, departing from and returning to Bangkok. It takes you to the northern Thailand cities of Lampang and Chiang Mai, steeped in history and culture.

Day 1 Depart Bangkok and enjoy afternoon tea as the train heads north. A sumptuous dinner is served on board.

Day 2 After breakfast, alight at Lampang for a tour in one of the city's trademark horse-drawn carriages. Visit Ban Sao Nak, the House of Many Pillars, built in 1895 by a teak merchant. Return to the train for brunch and the journey to Chiang Mai, capital of the Kingdom of Lanna from 1296 to 1939. There are two options to choose from.

The first is a drive through the old town with a stop for a traditional monk's blessing,

followed by a guided walking tour. Explore a bustling local market with the owner of a famous dessert salon, then visit the W by Wanlamun restaurant for a culinary demonstration of *yum sum-o*—traditional pomelo salad. The second option is to indulge in an afternoon of shopping with visits to some of Chiang Mai's many cottage industries. See mulberry-paper parasols being elaborately decorated, wood-ash glazed celadon pottery being crafted, and the entire silk making process from worm to weave.

A break at the Dhara Dhevi Tea House follows, after which you can stay here and relax or continue shopping at the Lanna-style Kad Dhara village.

Day 3 Enjoy a leisurely breakfast and lunch on the train before alighting at Bangkok.

Far right: Wat Phra Sing Temple, Chiang Mai.





EXPLORE AND DISCOVER

HIGHLIGHTS OF CHIANG MAI

Discover the best of Chiang Mai on one of our sightseeing tours below. Or let us create a tailor-made itinerary especially for you.

White-water Rafting and Elephant Ride

An exhilarating ride through winding gorges followed by a jungle trek on an elephant.

Golf Tee off on the beautiful and immaculate Summit Green Valley course, a short drive from the centre of Chiang Mai.

STAY IN STYLE

CHIANG MAI

If you're visiting Chiang Mai, we can organise a stay at one of these carefully selected hotels for however many days you choose.

Four Seasons Located in a beautiful valley, a short drive from the city, guests at this luxurious resort enjoy wonderful Thai cuisine, an infinity-edge pool and a spa.

Dhara Dhevi Magnificent suites and villas, complementing the historic Lanna Kingdom style, nestle in tropical gardens.

OUR SIGNATURE JOURNEY

FABLES OF THE PENINSULA

**SINGAPORE-KUALA LUMPUR-
CAMERON HIGHLANDS-PENANG-HUAY YANG**
7 DAYS & 6 NIGHTS

This cultural adventure, limited to just 60 guests in State and Presidential Cabins, begins with a night at the legendary Raffles Hotel in Singapore, before whisking you off to Kuala Lumpur, the Cameron Highlands and Huay Yang.

Day 1 Arrive at Raffles Hotel in Singapore. Time to explore The Lion City at leisure.

Day 2 Board the train in the early afternoon. Following an evening cocktail reception, sit down to enjoy an opulent dinner prepared by our chefs.

Day 3 Arrive in Kuala Lumpur. Choose between an early-

morning visit to a famous “wet” market or a tour of the city’s heritage museums. Re-board the train for the journey to Tapah Station, where you disembark for a two-hour coach drive to the magnificent Cameron Highlands Resort.

Day 4 Choose between visiting the Best of Highlands tea plantation or join a naturalist on the Jim Thompson jungle trail. Leave the resort after lunch and return to the train for a sumptuous dinner.

Day 5 Transfer from Butterworth Station to Penang island. Choose to either tour colonial George Town, visit the

Peranakan Heritage Museum or explore the Tropical Spice Garden. Meet at the historic Eastern & Oriental Hotel for tea. Back on board, the train continues towards Thailand.

Day 6 Arrive in Huay Yang on Thailand’s east coast. A local *song thaew* takes you to the charming fishing village of Baan Huay Yang. Cross to the island of Koh Chaan for a morning of snorkelling or sunbathing, followed by a seafood barbecue at Nishaville. Return to the train to prepare for a farewell cocktail party and dinner.

Day 7 Disembark in Bangkok.





EXTEND THE EXPERIENCE

BEACH BREAKS

To make the most of your time in Southeast Asia, why not add one of our wonderful extensions to the start or end of your train journey—for instance, indulge in a relaxing beach break away from it all on a beautiful Balinese or Thai island. Stay for a night or two or a week or more—we can plan every detail to suit you.

BALI

The magical Indonesian island is renowned for its breathtaking sandy beaches and crystal-clear coves. Stay at **Belmond Jimbaran Puri**, where exquisite cottages and villas, each with a private swimming pool and Balinese garden, are scattered among frangipani trees beside one of the island's best beaches. Take a refreshing dip in the large free-form pool offering uninterrupted sea views, and make the most of the resort's library, boutique and spa. Choose to dine in one of the resort's excellent restaurants, which includes Nelayan, where you can savour just-caught fish as you feel the soft sand between your toes and watch the sun dramatically sink beneath the water.

KOH SAMUI

A short flight from Bangkok, this lush and charming Thai island is fringed by turquoise waters and pristine sands. Stay in a beautiful villa or suite at **Belmond Napasai** to enjoy the private beach and palm-shaded gardens or to explore the natural wonders of Ang Thong National Marine Park, heading off on boat trips or to try windsurfing, kayaking and snorkelling. Enjoy the resort's infinity and children's pools, tennis courts and spa, which is a relaxing sanctuary. Venture out to discover fascinating attractions such as the towering Big Buddha or the lush jungle interior, renowned for its spectacular waterfalls. For lovers of golf there is an excellent hilltop course with outstanding views.

Right: the private beach at the luxurious resort of Belmond Napasai, Koh Samui.







EXTEND THE EXPERIENCE

ICONIC CULTURAL SITES

Combine your train adventure with an extension to Cambodia, home of the magnificent Angkor temple complex, Phnom Penh, Cambodia's vibrant capital, or Luang Prabang in Laos.

CAMBODIA

Cambodia offers an intoxicating mix of magnificent architecture and unspoilt jungles and mountains. Its most famous draw is the fabled Angkor, capital of the Khmer Empire, featuring 100 temples, shrines and pagodas. We can arrange guided tours to suit you. Watch the sun rise over the main temple, Angkor Wat, before exploring the complex and feeding the elephants. Or visit the fishing village at Tonlé Sap Lake or the Khmer craftsmen of Artisans d'Angkor. We also offer extensions to magical Phnom Penh on the Mekong, celebrated for its French colonial buildings, the Royal Palace and Psar Thmei market.

LAOS

Largely untouched by tourism, Laos boasts stunning landscapes and a rich cultural heritage. The UNESCO World Heritage town of Luang Prabang blends decorative buildings with lush mountain scenery and fragrant gardens. Built in 1560, the town has colourful traditional and colonial buildings decorated with gilded stuccos and mirrored mosaics. We can arrange guided visits to the main temples or a full-day Mekong river trip to Pak Ou to see the Holy Caves—or anything else you would like to do. Legend has it that the Buddha smiled when he rested in Luang Prabang—we think you'll do the same.

Clockwise from above left: Angkor Wat; street scene in Luang Prabang; the town's Wat Xieng Thong temple; and Buddhas in the Pak Ou Caves, Laos.





STAY IN STYLE

CAMBODIA and LAOS

To enhance your Southeast Asian adventure, stay at one of our recommended hotels.

CAMBODIA

ANGKOR

Belmond La Résidence d'Angkor Our intimate hotel, on the banks of the Siem Reap River, is close to the temples. Surrounded by lush gardens, it is furnished in local style and enhanced by modern and luxurious touches.

PHNOM PEHN

Raffles Hotel Le Royal Favoured by the well travelled since 1929, this hotel is ideally placed for sightseeing. Savour French and Cambodian delicacies in the restaurant and try a signature Femme Fatale cocktail in the Elephant Bar.

Hotel Sofitel Phnom Penh Phokeethra

French colonial elegance greets you at this luxurious riverside hotel, minutes from key attractions such as the Royal Palace and National Museum. Make the most of the fantastic restaurants and soothing spa.

LAOS

LUANG PRABANG

Belmond La Résidence Phou Vao

Nestling on a hill overlooking the Mekong and Nam Khan rivers, our leafy hideaway with stunning views of mountains and temples has an infinity-edge pool, spa and restaurant serving French and Laotian cuisine.

EXPLORE AND DISCOVER

CAMBODIA and LAOS



Join one of our sightseeing tours below or let us arrange a bespoke tour to match your particular interests.

CAMBODIA

Siem Reap Sightseeing Full-day visit to the town's most magical temples and sights, including Ta Prohm, Angkor Thom, the Terrace of the Leper King and Bayon.

LAOS

Wat Xieng Thong and Pak Ou Caves Visit Wax Xieng Thong temple, then travel up the Mekong River to the caves adorned with Buddha images. Rice wine tasting and a visit to Ban Phanom village is included.

The Temples of Luang Prabang Walking tour of the town's most magnificent wats and pagodas and a short climb to Mount Phousi to admire the views.

EXTEND THE EXPERIENCE

VIETNAM

Let us take you on a tour through Vietnam, a country blending a rich culture with stunning scenery, dynamic cities and friendly locals.

Below is just a taste of what you can see and do on a tailor-made itinerary before or after your train journey.

Begin your adventure in Hanoi, in the north, enjoying a day or two exploring the old quarter and the UNESCO site of Ha Long Bay with its spectacular limestone pillars. Next you can fly to Hué to visit the Imperial City and Royal Citadel, take a boat trip on the Perfume River and visit the Imperial tombs. By road, transfer to Hoi An, soaking up the beautiful scenery and stopping at the enigmatic Marble Mountain on the way.

In the graceful town of Hoi An you can explore historic merchant houses, the famous Japanese Bridge and vibrant café culture. From nearby Na Dang you then fly to Ho Chi Minh City (Saigon) to immerse yourself in its historical riches and high-octane energy. Highlights include the Reunification Palace, the Cu Chi Tunnels and the Mekong Delta, Vietnam's so-called "rice bowl".

Right to left: Ha Long Bay, Vietnam;
bustling Hanoi; and paper lanterns for sale, Hué.





STAY IN STYLE

VIETNAM

For the ideal place to unwind and relax in this dramatic country, choose from our choice of preferred hotels.

HANOI

Sofitel Legend Metropole This legendary hotel is located in Hanoi's French Quarter, steps from the Opera House. Behind the colonial white façade lies the opulence of a bygone era, with suites named after former guests such as Graham Greene and W. Somerset Maugham. Dine on sumptuous French, Italian and Asian cuisine or treat yourself to sumptuous spa therapies.

HUẾ

La Résidence Hue Hotel & Spa This spectacular boutique hotel, a member of the luxury MGallery Collection by Accor, sits on the banks of the fabled Perfume River overlooking the former Imperial Citadel. A restored art deco gem, it boasts a saltwater swimming pool, formal gardens, fine-dining restaurant and award-winning spa.

HOI AN

Anantara Hoi An Resort Local and colonial charm combine at this retreat on the banks of the Thu Bon River. The hotel's architectural blend of French, Dutch, Chinese and Japanese influences reflects Hoi An's incredible cultural diversity. Relax in split-level rooms opening onto generous balconies, laze by the pool or dine on authentic local dishes by the river.

HO CHI MINH CITY

Park Hyatt Saigon Located in Lam Son Square, close to the Opera House, Notre Dame Cathedral and Reunification Palace, this majestic hotel redefines urban luxury with its sophisticated design, modern comforts and Vietnamese hospitality. Dine in world-class restaurants, join the hip crowd in the 2 Lam Son bar or retreat to the Xuan Spa.



VOYAGES BY LAND AND RIVER

For the ultimate Southeast Asian experience,
combine the best of both worlds of land and river
travel: our train and our two river cruisers in Myanmar.

The **Eastern & Oriental Express** travels between the dynamic cities of Singapore and Bangkok through the forested countryside of Malaysia and Thailand, blending unrivalled on-board comfort with intoxicating vistas of jungle-clad hills, ancient temples and lush paddy fields.

You can combine a journey on the train with a variety of cruises on either **Belmond Road to Mandalay** or her sister ship **Belmond Orcaella**, which glides along the Chindwin and Ayeyarwady Rivers with only 50 guests on board. Choose from

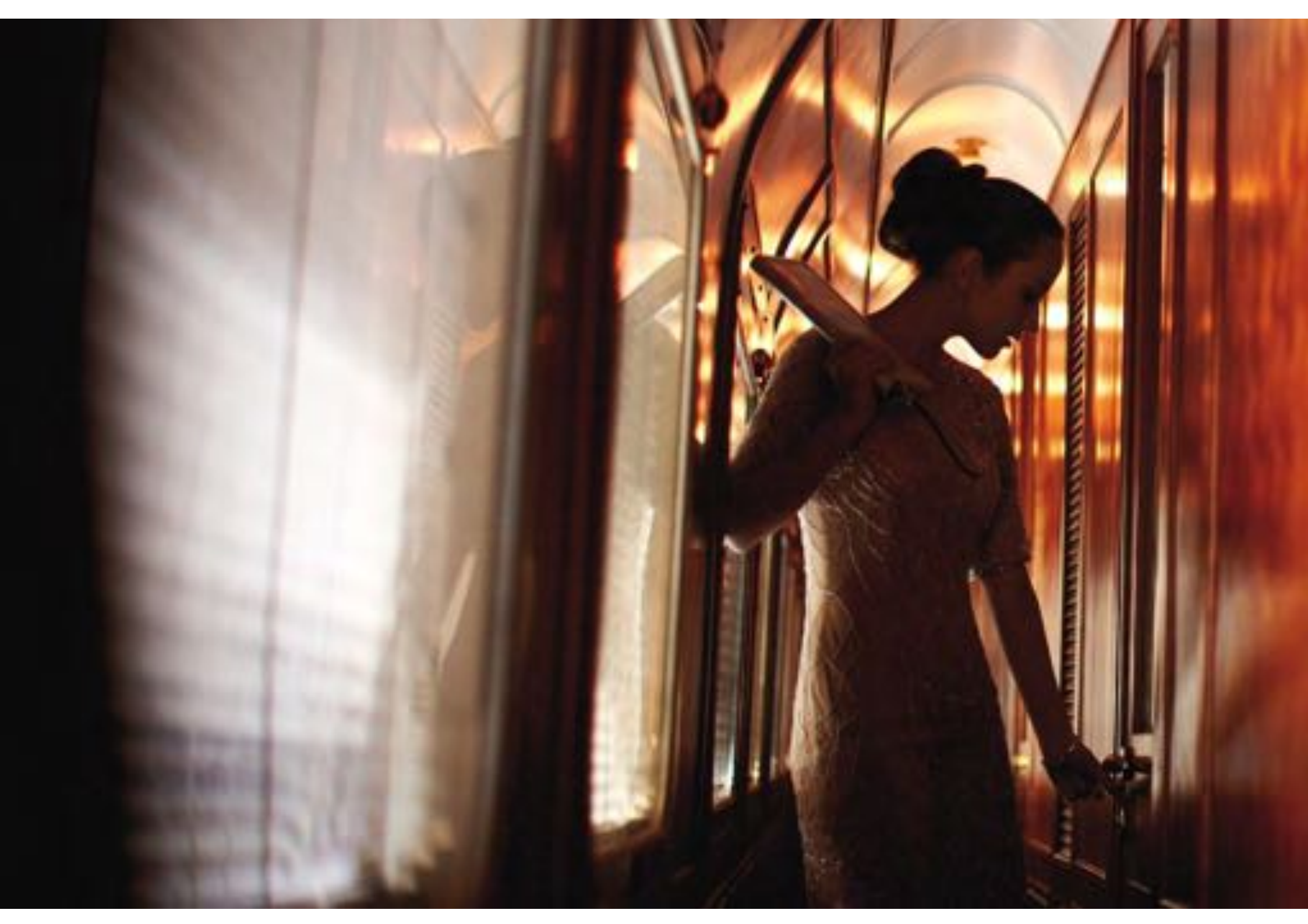
three- to 11-night cruises and add three to five nights travelling overland on the Eastern & Oriental Express. Stay at the leafy Belmond Governor's Residence in Yangon to catch your breath between adventures.

There is also the opportunity to extend your Asian experience further with hotel stays in destinations ranging from vibrant cities to blissful beach resorts.

Whatever combination you decide on, you can be certain of thrilling discoveries and unforgettable memories on this journey of a lifetime.

Embark on a never-to-be-forgotten adventure by combining your overland trip on the Eastern & Oriental Express with a river cruise in Myanmar.







MORE JOURNEYS OF DISCOVERY

Explore thrillingly beautiful regions of Europe and Southeast Asia aboard Belmond's luxurious trains and river cruisers.

Whether you wish to realise a lifetime's dream to travel on the Venice Simplon-Orient-Express, glide through the famous vineyards of Burgundy on a luxurious barge or soak up the majestic sights of Myanmar aboard an intimate cruise ship, Belmond's magnificent trains and river cruisers offer journeys to suit all tastes. Boasting exceptional staff, superb cuisine and a wealth of local knowledge, our travel experiences are designed to delight every guest. We invite you to explore our world.



TRAINS

VENICE SIMPLON-ORIENT-EXPRESS

Top of many travellers' must-do list is the legendary train, which whisks you back to the golden age of travel in its sumptuous art deco carriages. Journey to evocative destinations such as Venice, Prague, Stockholm and Istanbul or enjoy Inclusive Tours incorporating hotel stays in our Belmond hotels.

EASTERN & ORIENTAL EXPRESS

Coursing through rainforests, past mountains and paddy fields, this elegant train offers glorious journeys between Singapore and Bangkok, as well as taking you on more off-the-beaten-track experiences around Southeast Asia to royal cities, idyllic islands and highland tea plantations.

BELMOND BRITISH PULLMAN

Board the splendid 1920s carriages in London to embark on day and weekend trips to some of the UK's most enticing destinations. Dine on gastronomic cuisine, enjoy the silver service and fine wines as you travel to stately homes, castles, glorious gardens or great British sporting events.

BELMOND ROYAL SCOTSMAN

With just 36 passengers on board, this "country house on wheels" offers an idyllic way to explore the Scottish Highlands, combining glorious dining, private en-suite cabins, changing vistas and entertainment on board with engaging off-train activities such as golf or whisky tasting.

BELMOND NORTHERN BELLE

Travel in the style of the 1920s and 1930s aboard the vintage carriages of the Belmond Northern Belle, enjoying fine cuisine and wines and passing stunning scenery as you discover the best of Britain's cities, such as Bath, Chester and Cornwall, famous landmarks and major events.