


BELMOND
VILLA SAN MICHELE
FLORENCE

LIMONAIA VILLA Belmond Villa San Michele

Located in the 17th century 'Limonaia' (the former orangerie of the monastery), a private building in the hotel's Italian gardens, the Villa enjoys a prime location with a breathtaking view over Florence and the surrounding hills. The top floor suite can be connected on request to the below garden level suite through a staircase.

Those are connected to a third suite through the garden which creates a one-of-a-kind "private villa in the Villa", a unique haven, ideal for guests whose expectations are to have the best in terms of comfort, space and privacy.

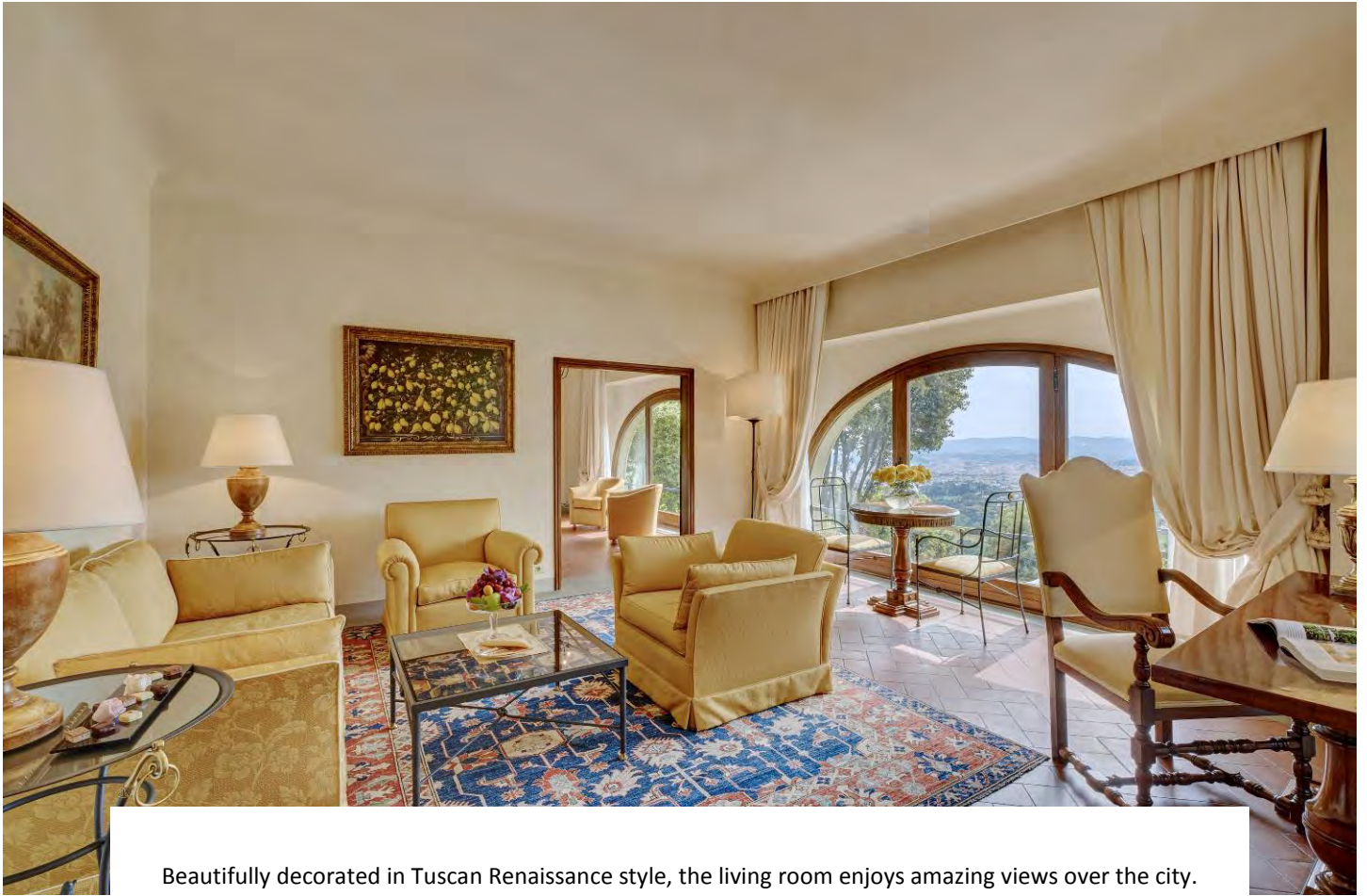
It can also be reserved for families, groups of friends or for special occasions such as a wedding or exclusive party.

The Limonaia Villa all together comprises of three bedrooms, three living rooms, four bathrooms, a small kitchenette and a private plunge pool on the top floor garden.



Limonaia Villa Details

Location:	In a private building in the hotel's Italian gardens
View:	Breathtaking view over Florence and the surrounding hills
Beds:	3 bedrooms with king size beds, twin beds available on request 1 or 2 extra beds per bedroom can be added
Living areas:	3 living areas
Bathroom:	3 full bathrooms (separated shower and bath tub) plus 1 courtesy bathroom
Max occupancy:	9 people
Size:	M ² 191; Sq.ft. 2056
Features:	210 m ² terrace on two floors, with private heated plunge pool



Beautifully decorated in Tuscan Renaissance style, the living room enjoys amazing views over the city.

The marble bathrooms have separate shower and bath,
double vanities with luxurious toiletries and a spacious wooden wardrobe.



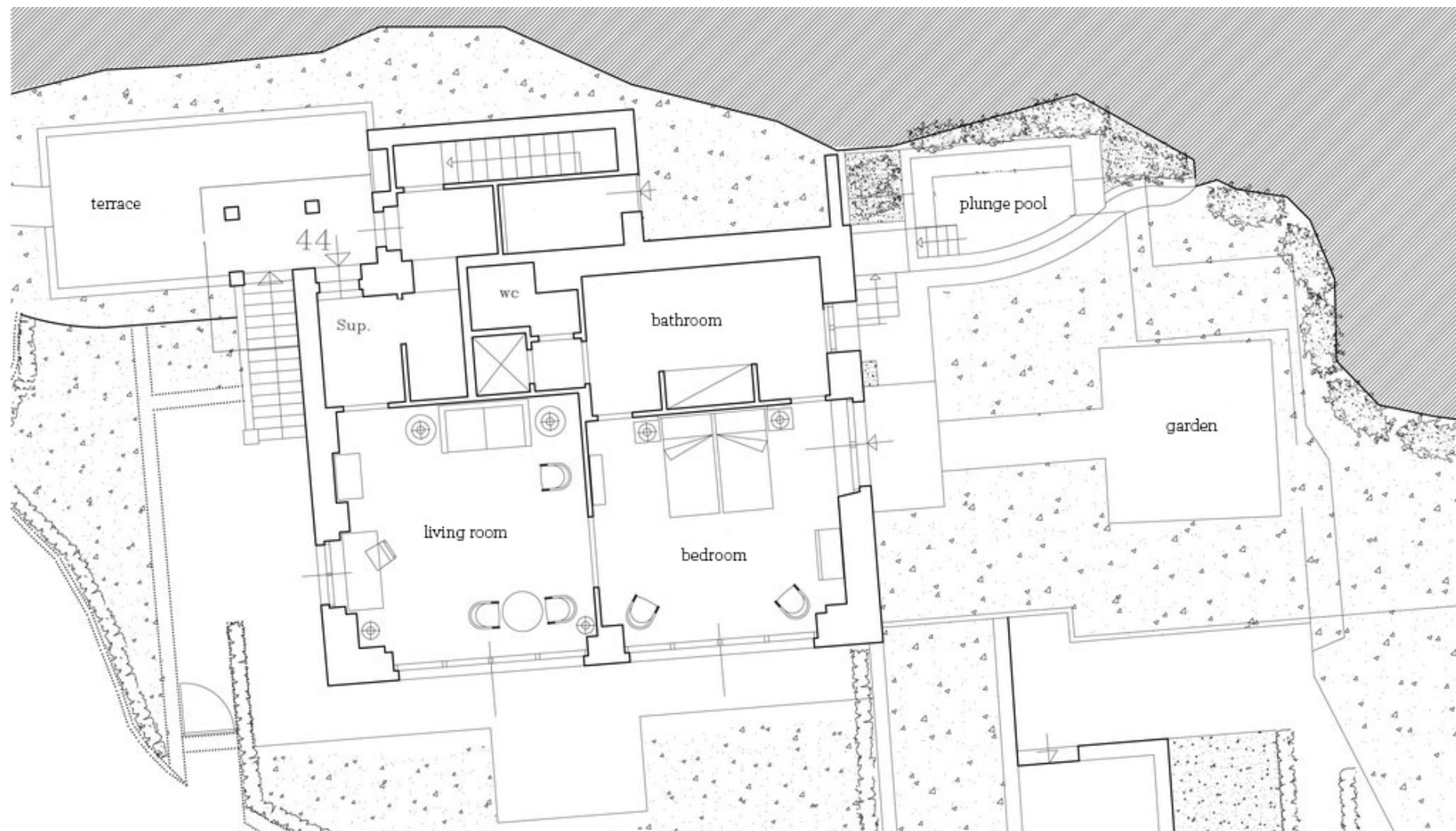


The Limonaia's private garden has its own heated plunge pool, made from stone, and a small waterfall that blends in perfectly with the leafy surroundings.



LIMONAIA VILLA - TOP FLOOR

LIMONAIA SUITE - 44





The two interconnecting suites on the garden floor of the Limonaia Villa have a beautiful private outdoor, where guests can enjoy breakfast or dinner in total privacy.



LIMONAIA VILLA - GROUND FLOOR

GARDEN SUITE - 42



GARDEN SUITE - 43

